

*Silent  
Pump*



*Sound-Attenuated,  
Engine-Driven Pumps*

**GR**  
**GORMAN-RUPP**  
**PUMPS**

*The Pump People®*

## FEATURES:

- Automatic start warning tone indicator
- Spill containment environmental base design
- Microprocessor level and systems control
- Lockable doors
- 24-hour continuous run-time fuel efficiency
- Corrosion-resistant enclosure
- Noise levels as low as 63 dBA while operating at full load
- Super T Series®, Ultra V Series® or Prime Aire® pump

# QUIET, RELIABLE PUMPING SYSTEMS

*Gorman-Rupp sound-attenuated, engine-driven pumps are environmentally engineered to operate much quieter than industry standards.*

Super T Series® silent pump units include all of the benefits of our popular self-priming centrifugal product line. Our patented external shimless adjustment design, easily removable coverplate and rotating assembly, solids-handling impeller and long-lasting mechanical cartridge seal allow for economical operation and trouble-free service.

PA Series® priming-assisted models feature our venturi and compressor priming system. This system greatly reduces environmental

concerns on sewage bypass operations and allow the pumps to operate under flooded suction conditions. Prime Aire® pumps are ideal in applications requiring long suction lines, intermittent flows or large volumes of air in the liquid being pumped.

Optional equipment available with Silent Pumps include: suction and discharge gauge kit\*, DOT trailer for portable use and cold weather extended stay kit (oil, fuel and volute casing heater and solar battery charger).

## Corrosion-Resistant Enclosure

All units come standard with an industry leading lightweight, corrosion-resistant aluminum enclosure with integral steel base and fuel tank. Lockable enclosure doors prevent unauthorized personnel from interrupting the pump during unattended service and minimize the chance of freezing.

## Environmental Base

All sound-attenuated models include a built-in environmentally friendly base. Should a leak occur, the base contains the fluid and virtually eliminates the risk of costly cleanups. Drain ports are conveniently located in the base to allow servicing.

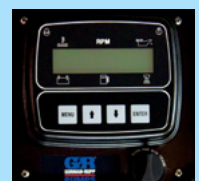
## Standard Auto-Start Controls

Auto-Start controls start and stop the pump in response to fluctuating liquid levels. A state-of-the-art microprocessor-based digital engine control monitors all engine functions including alarms. The control panel features an easy-to-read 32-character display.

\*Option only available on Super T Series® and Ultra V Series® models.



The modular design, featured on several PA Series® pump models, enables the addition/removal of a lightweight, aluminum, acoustically-treated enclosure to the standard fuel base. The enclosure provides excellent corrosion resistance and offers a significant reduction in sound levels (68 dBA at 23').



All Gorman-Rupp Super T Series® and PA Series® pumps and ReliaPrime® back-up systems come standard with industry leading warranties.



# GORMAN-RUPP PUMPS

## Sound-Attenuated, Engine-Driven Pumps



**Super T Series®**  
 Size: 4" (100mm) to 6" (150 mm)  
 Max Capacity: 1600 GPM (100.9 lps)  
 Max Head: 138' (42.1 m)  
 Max Solids: 3" (76.2 mm)  
 Max Temperature: 160°F ( 71°C)  
 Engine: Cummins, John Deere



**PA Series®**  
 Size: 4" (100 mm) to 14" (350 mm)  
 Max Capacity: 9950 GPM (627.7 lps)  
 Max Head: 195' (59.4 m)  
 Max Solids: 3" (76.2 mm)  
 Max Temperature: 160°F ( 71°C)  
 Engines: Caterpillar, John Deere, Isuzu, Yanmar

## Sound-Attenuated, Engine-Driven Back-Up Systems



**Super T Series® ReliaPrime®**  
 Size: 6" (150 mm)  
 Max Capacity: 1600 GPM (100.9 lps)  
 Max Head: 138' (42.1 m)  
 Max Solids: 3" (76.2 mm)  
 Max Temperature: 160°F ( 71°C)  
 Engine: Zenith



**Ultra V Series® ReliaPrime®**  
 Size: 3" (75 mm)  
 Max Capacity: 825 GPM (52.0 lps)  
 Max Head: 110' (33.5 m)  
 Max Solids: 3" (76.2 mm)  
 Max Temperature: 160°F ( 71°C)  
 Engine: Zenith

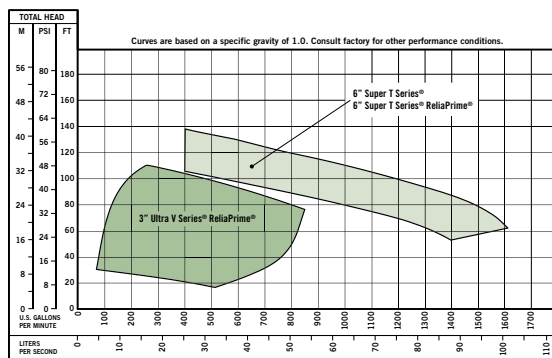


**PA Series® ReliaPrime®**  
 Size: 3" (75 mm)  
 Max Capacity: 825 GPM (52.0 lps)  
 Max Head: 110' (33.5 m)  
 Max Solids: 3" (76.2 mm)  
 Max Temperature: 160°F ( 71°C)  
 Engine: Zenith

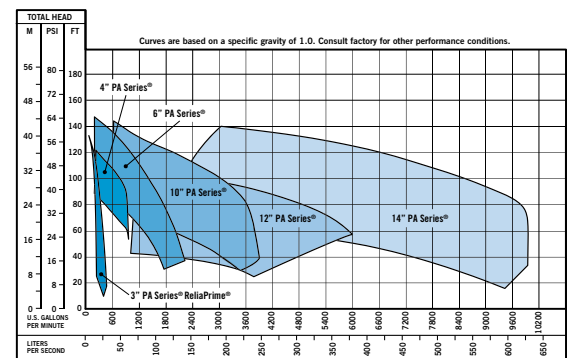
Municipalities are using sound-attenuated engine-driven pumps instead of traditional emergency generators for lift station back-up and bypass.

## Pump Performance Data

### Self-Priming Models



### Priming-Assisted Models



# FLUID-HANDLING EQUIPMENT DESIGNED WITH YOUR NEEDS IN MIND



★ Manufacturing Facilities  
● Distribution Centers

Gorman-Rupp USA  
Mansfield, Ohio, USA  
Gorman-Rupp Canada  
St. Thomas, Ontario, Canada

Gorman-Rupp Europe  
Waardenburg, Netherlands  
Namur, Belgium  
Gorman-Rupp Africa  
Cape Town, South Africa  
Durban, South Africa  
Johannesburg, South Africa (Headquarters)

Distribution Centers  
Dubai, United Arab Emirates  
Grand Prairie, Texas, USA

Engineering and manufacturing superiority has been the hallmark of Gorman-Rupp since our inception in 1933. Today we bring our products to life in some of the most efficient, modern and state-of-the-art manufacturing facilities in the world. Gorman-Rupp has a selection of nearly 3,000 pump models, and our world-class team of distributors has worked closely with thousands of end users around the world. We have the proven expertise and the resources to specify, manufacture, test and service your pump, and to ensure reliable performance for the long haul.



**GORMAN-RUPP PUMPS**  
P.O. BOX 1217  
MANSFIELD, OHIO 44901-1217 | USA  
TEL: 419.755.1011 | FAX: 419.755.1251

**GRPUMPS.COM**



*The Pump People®*