



GROWING TOGETHER

# MATERIAL HANDLING

INDUSTRIAL TIRES







# MATERIAL HANDLING

## INDUSTRIAL TIRES

Also in the industrial sector, tires must face several daily challenges. BKT has coped with this matter by designing a wide range of tires that perfectly satisfy the different needs even in this sector. Therefore, BKT offers three different tire types that are ideal for forklifts: radial, bias and solid. Each type provides specific features highlighting different performance requirements: an extended tire life-cycle, reduced energy consumption, excellent stability and comfort. Moreover, these tires have been specifically designed for the slightest floor marking enabling operations in a clean industrial environment. Discover the full BKT range and choose the right tire for you.

## TECHNOLOGIES AND PERFORMANCE

<b>All Steel</b>	<b>Extra Deep Tread</b>	<b>Heavy Duty</b>	<b>Special Antistatic Compound</b>
<b>Comfort</b>	<b>Cut and Chip Resistance</b>	<b>Cut Resistance</b>	<b>Durability</b>
<b>Handling &amp; Comfort</b>	<b>High Load Capacity</b>	<b>Low Rolling Resistance</b>	<b>Stability</b>
<b>Steering</b>	<b>Traction</b>		



### Radials

Radial tires have cord plies that are arranged running radially from bead to bead around the tire. Sidewall and tread have independent functional features providing more flexibility, great performance, durability, and fuel economy.



### Bias

Bias tires have cord plies that are arranged running diagonally from bead to bead across the tire. Layers overlap forming a crisscross pattern. This design features extraordinary sidewall resistance, puncture resistance and high load capacity.



### Solid

Solid tires are not filled with air or other gases. They consist of several layers made of special rubber compounds or steel. Solid tires provide extraordinary stability, puncture resistance, and high load capability. These maintenance-free tires are mainly used for forklifts and other industrial vehicles.



# MATERIAL HANDLING TIRES



LIFTMAX LM 81



[ p. 6 ]



LIFTMAX LM 63



[ p. 7 ]



FL 252



[ p. 8 ]



SUPER TRAX HD



[ p. 15 ]



MAGLIFT



[ p. 16 ]



MAGLIFT PREMIUM



[ p. 22 ]



POWER TRAX HD SMOOTH



[ p. 9 ]



PL 801



[ p. 10 ]



POWER TRAX HD



[ p. 12 ]



MAGLIFT ECO



[ p. 23 ]



MAGLIFT ECO RIB



[ p. 25 ]







Radial



A5

Technologies



Special Antistatic Compound

Performance



Stability



Durability



# LIFTMAX LM 81

LIFTMAX LM 81 has been specially designed for forklift equipment in material handling and industrial applications. This All Steel radial tire offers lower vibration, and greater stability as well as increased durability. The special antistatic tread compound provides excellent wear resistance even under the most demanding operating conditions.

Ø 8"	Tire size	Type	STAR RATING	LI/SS	Version	S.W. (mm)	O.D. (mm)	SLR (mm)	RC (mm)	RIM	
										Rec.	Alt.
	5.00 R 8	TL	-	111A5	STD	138	471	-	-	3.00 D	3.25 I; 3.75 I
	180/70 R 8	TL	-	125A5	STD	170	453	-	-	4.33R	-
Ø 9"	Tire size	Type	STAR RATING	LI/SS	Version	S.W. (mm)	O.D. (mm)	SLR (mm)	RC (mm)	RIM	
	6.00 R 9	TL	-	121A5	STD	160	540	-	-	4.00 E	-
Ø 10"	Tire size	Type	STAR RATING	LI/SS	Version	S.W. (mm)	O.D. (mm)	SLR (mm)	RC (mm)	RIM	
	6.50 R 10	TL	-	128A5	STD	178	590	-	-	5.00 F; 5.50 F	-
	225/75 R 10	TL	-	142A5	STD	220	595	-	-	6.50F	-
Ø 12"	Tire size	Type	STAR RATING	LI/SS	Version	S.W. (mm)	O.D. (mm)	SLR (mm)	RC (mm)	RIM	
	7.00 R 12	TL	-	136A5	STD	195	675	-	-	5.00 S	-
	250/75 R 12	TL	-	152A5	STD	260	680	-	-	8.0	-
Ø 15"	Tire size	Type	STAR RATING	LI/SS	Version	S.W. (mm)	O.D. (mm)	SLR (mm)	RC (mm)	RIM	
	7.00 R 15	TL	-	143A5	STD	199	745	-	-	5.50	5.00
	7.50 R 15	TL	-	146A5	STD	212	778	-	-	6.00	6.5
	8.25 R 15	TL	-	153A5	STD	234	836	-	-	6.5	7.0
	225/75 R 15	TL	-	149A5	STD	226	712	-	-	7.00	-
	250/70 R 15	TL	-	153A5	STD	230	735	-	-	7.00	-
Ø 20"	Tire size	Type	STAR RATING	LI/SS	Version	S.W. (mm)	O.D. (mm)	SLR (mm)	RC (mm)	RIM	
	10.00 R 20	TL	-	166A5	STD	275	1066	-	-	7.50	-
	11.00 R 20	TL	-	170A5	STD	288	1092	-	-	8.00	8.5
	12.00 R 20	TL	-	176A5	STD	314	1134	-	-	8.50	8.0

STD: Standard



# LIFTMAX LM 63

LIFTMAX LM 63 has been specially developed for industrial and logistics operations. The 3-rib tread design provides low rolling resistance with good wet grip and uniform tread wear with better handling. It is an All Steel radial tire with multilayer steel belts offering lower vibration as well as enhanced stability and comfort.



Ø 24"	Tire size	Type	STAR RATING	LI/SS	Version	S.W. (mm)	O.D. (mm)	SLR (mm)	RC (mm)	RIM	
										Rec.	Alt.
	12.00 R 24	TT	-	178A5	STD	310	1235	-	-	8.50	9.0
	14.00 R 24	TL	-	193A5	STD	388	1415	-	-	10.00W	10.0, 10.00WA

STD: Standard



Radial



A5

Technologies



All Steel

Performance



Stability



Comfort

Ø 9"	Tire size	Type	STAR RATING	LI/SS	Version	S.W. (mm)	O.D. (mm)	SLR (mm)	RC (mm)	RIM	
										Rec.	Alt.
	6.00 R 9	TL	-	121A5	STD	160	542	-	-	4.00E	-
Ø 15"	Tire size	Type	STAR RATING	LI/SS	Version	S.W. (mm)	O.D. (mm)	SLR (mm)	RC (mm)	RIM	
	8.25 R 15	TL	-	153A5	STD	240	844	-	-	6.5	7.0

STD: Standard





# FL 252

FL 252 is a tire suitable for hay harvesting applications with rotor rakes/tedders as well as for logistic operations using forklifts. This tire provides excellent durability while the specific tread pattern ensures maximum stability during lifting operations.

### Performance



Stability



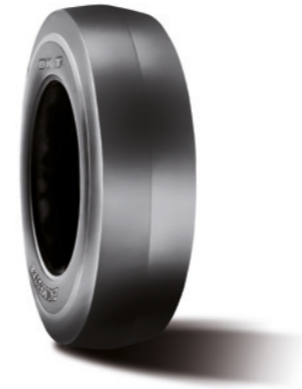
Durability



Cut and Chip Resistance

Ø 8"	Tire size	Type	PR	LI/SS	Version	S.W. (mm)	O.D. (mm)	SLR (mm)	RC (mm)	RIM	
										Rec.	Alt.
Ø 8"	5.00 - 8	TT	8	-	STD	138	480	-	-	3.00 D	3.25 I
	5.00 - 8	TT	10	-	STD	138	480	-	-	3.00 D	3.25 I
Ø 9"	6.00 - 9	TT	10	-	STD	170	550	-	-	4.00 E	-
Ø 10"	6.50 - 10	TT	10	-	STD	185	605	-	-	5.00 F	5.50 F
Ø 12"	7.00 - 12	TT	14	-	STD	190	688	-	-	5.00 S	-
Ø 15"	8.15 - 15	TT	14	-	STD	220	720	-	-	7.00	7 BD
	8.25 - 15	TT	14	-	STD	240	855	-	-	6.50	7.0

STD: Standard



# POWER TRAX HD SMOOTH

POWER TRAX HD SMOOTH is a bias-ply tire specially designed for port and underground mining operations. The special sidewall protection along with a solid tread prevents cut and puncture damages that are common in such demanding environments. When you need to move heavy-duty loads, Power Trax HD Smooth is your ideal partner.

Ø 20"	Tire size	Type	PR	LI/SS	Version	S.W. (mm)	O.D. (mm)	SLR (mm)	RC (mm)	RIM	
										Rec.	Alt.
Ø 20"	12.00 - 20	TT	20	-	STD	320	1150	-	-	8.50	9.0
	12.00 - 20	TT	28	-	STD	320	1150	-	-	8.50	9.0

STD: Standard



Bias

### Technologies



Heavy Duty



Extra Deep Tread

### Performance



Durability



Stability



Cut and Chip Resistance







Bias



# PL 801

PL 801 has been specially designed for hay harvesting applications with rotor rakes/ tedders and for logistics operations with forklifts. It features excellent stability as well as high cut and chip resistance. PL 801 ensures an extended tire life-cycle.

### Performance



Stability



Durability



Cut and Chip Resistance

Ø 5"	Tire size	Type	PR	LI/SS	Version	S.W. (mm)	O.D. (mm)	SLR (mm)	RC (mm)	RIM	
										Rec.	Alt.
	23 X 5	TT	6	-	STD	154	640	-	-	3.75 P	-
Ø 8"	5.00 - 8	TT	8	-	STD	135	468	-	-	3.00 D	3.25 I
	5.00 - 8	TT	10	-	STD	135	468	-	-	3.00 D	3.25 I
	18 X 7 - 8	TT	14	-	STD	173	470	-	-	4.33 R	5.00 F
	18 X 7 - 8	TT	16	-	STD	173	470	-	-	4.33 R	5.00 F
Ø 9"	6.00 - 9	TT	10	-	STD	157	543	-	-	4.00 E	-
	6.00 - 9	TT	10	-	SPL	157	543	-	-	4.00 E	-
	6.00 - 9	TT	12	-	STD	157	543	-	-	4.00 E	-
	21 X 8 - 9	TT	14	-	STD	200	535	-	-	6.00 E	7.00 E
	21 X 8 - 9	TT	16	-	STD	200	535	-	-	6.00 E	7.00 E
Ø 10"	6.50 - 10	TT	10	-	STD	185	595	-	-	5.00 F	5.50 F
Ø 12"	7.00 - 12	TT	12	-	STD	189	692	-	-	5.00 S	-
	7.00 - 12	TT	14	-	STD	189	692	-	-	5.00 S	-

STD: Standard - SPL: Special



Ø 15"	Tire size	Type	PR	LI/SS	Version	S.W. (mm)	O.D. (mm)	SLR (mm)	RC (mm)	RIM	
										Rec.	Alt.
	5.50 - 15	TT	8	-	STD	157	670	-	-	5.50	4.50 E DT; 4.50 E SDC
	7.00 - 15	TT	12	-	STD	200	750	-	-	5.5	4.33 R; 5.0
	7.00 - 15	TT	12	-	STD	206	775	-	-	6.0	5.50 BD; 5.5
	7.00 - 15	TT	14	-	STD	200	750	-	-	5.5	4.33 R; 5.0
	7.50 - 15	TT	12	-	STD	220	785	-	-	6.0	6.00 S; 6.5
	7.50 - 15	TT	14	-	STD	220	814	-	-	6.0	6.00 S; 6.5
	7.50 - 15	TT	14	-	STD	220	785	-	-	6.0	6.00 S; 6.5
	8.15 - 15	TT	12	-	STD	215	720	-	-	7.0	7.00 BD
	8.15 - 15	TT	14	-	STD	215	720	-	-	7.0	7.00 BD
	8.25 - 15	TT	12	-	STD	236	854	-	-	6.5	6.0; 7.0
	8.25 - 15	TT	14	-	STD	236	854	-	-	6.5	6.0; 7.0
	250 - 15	TT	16	-	STD	235	745	-	-	7.50 BD	7.0; 7.5
	250 - 15	TT	20	-	STD	235	745	-	-	7.50 BD	7.0; 7.5
	300 - 15	TT	18	-	STD	295	840	-	-	8.00 BD	8.0

STD: Standard



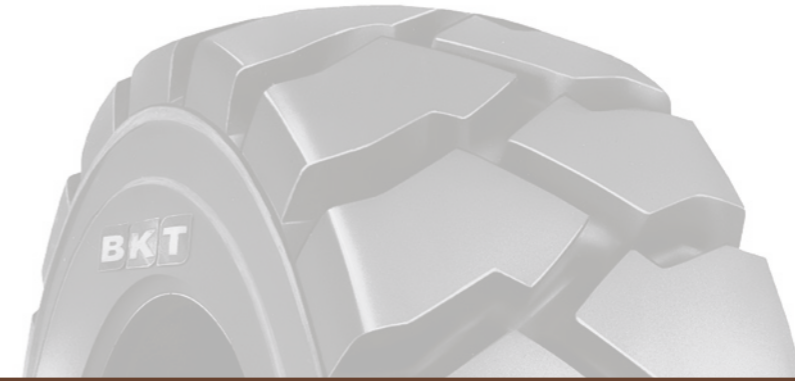


Bias



# POWER TRAX HD

POWER TRAX HD is a premium bias-ply tire that is specially designed for forklift equipment in industrial applications. The deep tread, the extra thick sidewall and the tough casing provide exceptional durability minimizing the risk of punctures and accidental damages. The tire features excellent cut, chip and tear resistance suitable for rough and hard concrete surface. The specially designed rim guard ensures protection against flats and wheel damages in the rim flange area.



Technologies



Heavy Duty



Extra Deep Tread

Performance



Durability



Stability



Cut and Chip Resistance

Ø 8"	Tire size	Type	PR	LI/SS	Version	S.W. (mm)	O.D. (mm)	SLR (mm)	RC (mm)	RIM	
										Rec.	Alt.
	5.00 - 8	TT	10	-	STD	145	480	-	-	3.00 D	3.25 I
	18 X 7 - 8	TT	16	-	STD	173	470	-	-	4.33 R	5.00 F
Ø 9"	6.00 - 9	TT	10	-	STD	166	543	-	-	4.00 E	-
Ø 10"	6.50 - 10	TT	10	-	STD	193	595	278	1774	5.00 F	5.50 F
	6.50 - 10	TT	12	-	STD	193	595	278	1774	5.00 F	5.50 F
	6.50 - 10	TT	14	-	STD	193	595	278	1774	5.00 F	5.50 F
	23 X 9 - 10	TT	18	-	STD	235	590	-	-	6.50 F	-
	23 X 9 - 10	TT	20	-	STD	235	590	-	-	6.50 F	-
Ø 12"	7.00 - 12	TT	14	-	STD	205	675	-	-	5.00 S	-
	7.00 - 12	TT	16	-	STD	205	675	-	-	5.00 S	-
	27 X 10 - 12	TT	16	-	STD	255	690	-	-	8.00 G	-
	27 X 10 - 12	TT	20	-	STD	255	690	-	-	8.00 G	-
Ø 15"	8.15 - 15	TT	14	-	STD	227	710	-	-	7.00	7 BD

STD: Standard

Ø 15"	Tire size	Type	PR	LI/SS	Version	S.W. (mm)	O.D. (mm)	SLR (mm)	RC (mm)	RIM	
										Rec.	Alt.
	8.25 - 15	TT	14	-	STD	248	845	-	-	6.50	7.0
	8.25 - 15	TT	16	-	STD	248	845	-	-	6.50	7.0
	10.00L - 15	TT	16	-	STD	285	918	-	-	7.50 BD	7.5
	10.00L - 15	TT	24	-	STD	285	918	-	-	7.50 BD	7.5
	28 X 12.5 - 15	TT	24	-	STD	304	705	-	-	9.75 BD	-
	250 - 15	TT	16	-	STD	240	745	-	-	7.50	7.0
	250 - 15	TT	18	-	STD	240	745	-	-	7.50	7.0
	250 - 15	TT	20	-	STD	240	745	-	-	7.50	7.0
	300 - 15	TT	20	-	STD	300	845	-	-	8.00	-
Ø 20"	9.00 - 20	TT	16	-	STD	270	1050	-	-	7.0	7.5
	10.00 - 20	TT	16	-	STD	285	1080	-	-	7.5	8.0
	10.00 - 20	TT	18	-	STD	285	1080	-	-	7.5	8.0
	10.00 - 20	TT	20	-	STD	285	1080	-	-	7.5	8.0

STD: Standard





Bias



# POWER TRAX HD

POWER TRAX HD is a premium bias-ply tire that is specially designed for forklift equipment in industrial applications. The deep tread, the extra thick sidewall and the tough casing provide exceptional durability minimizing the risk of punctures and accidental damages. The tire features excellent cut, chip and tear resistance suitable for rough and hard concrete surface. The specially designed rim guard ensures protection against flats and wheel damages in the rim flange area.

Ø 20"	Tire size	Type	PR	LI/SS	Version	S.W. (mm)	O.D. (mm)	SLR (mm)	RC (mm)	RIM	
										Rec.	Alt.
	12.00 - 20	TT	20	-	STD	320	1150	-	-	8.50	9.0
	12.00 - 20	TT	28	-	STD	320	1150	-	-	8.50	9.0

STD: Standard



# SUPER TRAX HD

SUPER TRAX HD has been specifically engineered for forklifts in heavy-duty material handling operations, including port and mining applications. The extra deep tread is made of a unique wear-resistant tread compound ensuring a longer service life. SUPER TRAX HD features a strong casing and a reinforced sidewall resulting in both excellent stability and maneuvering in lift mode. The specially designed rim guard provides protection against flats and wheel damage in the rim flange area.

Ø 9"	Tire size	Type	PR	LI/SS	Version	S.W. (mm)	O.D. (mm)	SLR (mm)	RC (mm)	RIM	
										Rec.	Alt.
	6.00 - 9	TT	12	-	STD	168	548	256	1672	4.00 E	-
Ø 10"	6.50 - 10	TT	12	-	STD	195	600	282	1838	5.00 F	5.50 F
Ø 12"	7.00 - 12	TT	14	-	STD	200	692	323	2088	5.00 S	-
Ø 15"	8.15 - 15	TT	14	-	STD	220	715	332	2169	7.00	7 BD
	8.25 - 15	TT	16	-	STD	245	845	395	2434	6.50	7.0

STD: Standard

Technologies



Heavy Duty



Extra Deep Tread

Performance



Durability



Stability



Cut and Chip Resistance



Bias

Technologies



Extra Deep Tread

Performance



Stability



Cut Resistance



Traction



Handling & Comfort



Durability





◆  
Solid



# MAGLIFT

MAGLIFT has been particularly designed for forklift in industrial and logistic operations. This solid tire features high load capacity and outstanding comfort. MAGLIFT shows excellent cut and chip resistance resulting in a long tire life. Its reinforced structure eliminates slippage risks whilst the special bead shape simplifies mounting operations on the rim.

Performance



Ø 8"	Tire size	Type	PR	LI/SS	Version	S.W. (mm)	O.D. (mm)	SLR (mm)	RC (mm)	RIM	
										Rec.	Alt.
	4.00 - 8	-	-	-	STD NM	109	406	-	-	3.00 D - 8	-
	4.00 - 8	-	-	-	LIP NM	109	406	-	-	3.00 D - 8	-
	4.00 - 8	-	-	-	STD	109	406	-	-	3.00 D - 8	-
	4.00 - 8	-	-	-	LIP	109	406	-	-	3.00 D - 8	-
	5.00 - 8	-	-	-	STD NM	120	462	-	-	3.00 D - 8	-
	5.00 - 8	-	-	-	LIP NM	120	462	-	-	3.00 D - 8	-
	5.00 - 8	-	-	-	STD	120	462	-	-	3.00 D - 8	-
	5.00 - 8	-	-	-	LIP	120	462	-	-	3.00 D - 8	-
	15 X 4.5 - 8	-	-	-	LIP NM	119	378	-	-	3.00 D - 8	-
	15 X 4.5 - 8	-	-	-	STD NM	119	378	-	-	3.00 D - 8	-
	15 X 4.5 - 8	-	-	-	STD	119	378	-	-	3.00 D - 8	-
	15 X 4.5 - 8	-	-	-	LIP	119	378	-	-	3.00 D - 8	-
	16 X 6 - 8	-	-	-	LIP NM	139	421	-	-	4.33 R - 8	-
	16 X 6 - 8	-	-	-	STD NM	139	421	-	-	4.33 R - 8	-
	16 X 6 - 8	-	-	-	STD	139	421	-	-	4.33 R - 8	-
	16 X 6 - 8	-	-	-	LIP	139	421	-	-	4.33 R - 8	-

STD: Standard - LIP: LIP Version - STD NM: Standard Non Marking - LIP NM: LIP Non Marking



Ø 8"	Tire size	Type	PR	LI/SS	Version	S.W. (mm)	O.D. (mm)	SLR (mm)	RC (mm)	RIM	
										Rec.	Alt.
	18 X 7 - 8	-	-	-	STD NM	153	457	-	-	4.33 R - 8	-
	18 X 7 - 8	-	-	-	LIP NM	153	457	-	-	4.33 R - 8	-
	18 X 7 - 8	-	-	-	STD	153	457	-	-	4.33 R - 8	-
	18 X 7 - 8	-	-	-	LIP	153	457	-	-	4.33 R - 8	-
Ø 9"	Tire size	Type	PR	LI/SS	Version	S.W. (mm)	O.D. (mm)	SLR (mm)	RC (mm)	RIM	
										Rec.	Alt.
	6.00 - 9	-	-	-	STD NM	141	529	-	-	4.00 E - 9	-
	6.00 - 9	-	-	-	LIP NM	141	529	-	-	4.00 E - 9	-
	6.00 - 9	-	-	-	STD	141	529	-	-	4.00 E - 9	-
	6.00 - 9	-	-	-	LIP	141	529	-	-	4.00 E - 9	-
	21 X 8 - 9	-	-	-	STD NM	189	525	-	-	6.00 E - 9	-
	21 X 8 - 9	-	-	-	LIP NM	189	525	-	-	6.00 E - 9	-
	21 X 8 - 9	-	-	-	STD	189	525	-	-	6.00 E - 9	-
	21 X 8 - 9	-	-	-	LIP	189	525	-	-	6.00 E - 9	-
	140/55 - 9	-	-	-	STD NM	132	377	-	-	4.00 E - 9	-
	140/55 - 9	-	-	-	LIP NM	132	377	-	-	4.00 E - 9	-
	140/55 - 9	-	-	-	STD	132	377	-	-	4.00 E - 9	-
	140/55 - 9	-	-	-	LIP	132	377	-	-	4.00 E - 9	-

STD: Standard - LIP: LIP Version - STD NM: Standard Non Marking - LIP NM: LIP Non Marking



◆  
Solid



# MAGLIFT

MAGLIFT has been particularly designed for forklift in industrial and logistic operations. This solid tire features high load capacity and outstanding comfort. MAGLIFT shows excellent cut and chip resistance resulting in a long tire life. Its reinforced structure eliminates slippage risks whilst the special bead shape simplifies mounting operations on the rim.

Performance



Ø 10"	Tire size	Type	PR	LI/SS	Version	S.W. (mm)	O.D. (mm)	SLR (mm)	RC (mm)	RIM	
										Rec.	Alt.
	6.50 - 10	-	-	-	STD NM	154	575	-	-	5.00 F - 10	-
	6.50 - 10	-	-	-	LIP NM	154	575	-	-	5.00 F - 10	-
	6.50 - 10	-	-	-	STD	154	575	-	-	5.00 F - 10	-
	6.50 - 10	-	-	-	LIP	154	575	-	-	5.00 F - 10	-
	23 X 9 - 10	-	-	-	LIP NM	213	585	-	-	6.50 F - 10	-
	23 X 9 - 10	-	-	-	STD NM	213	585	-	-	6.50 F - 10	-
	23 X 9 - 10	-	-	-	LIP	213	585	-	-	6.50 F - 10	-
	23 X 9 - 10	-	-	-	STD	213	585	-	-	6.50 F - 10	-
	180/60-10	-	-	-	STD	153	460	-	-	5.00F-10	-
	180/60-10	-	-	-	LIP	153	460	-	-	5.00F-10	-
	200/50 - 10	-	-	-	STD NM	193	458	-	-	6.50 F - 10	-
	200/50 - 10	-	-	-	LIP NM	193	458	-	-	6.50 F - 10	-
	200/50 - 10	-	-	-	STD	193	458	-	-	6.50 F - 10	-
	200/50 - 10	-	-	-	LIP	193	458	-	-	6.50 F - 10	-

STD: Standard - LIP: LIP Version - STD NM: Standard Non Marking - LIP NM: LIP Non Marking



Ø 12"	Tire size	Type	PR	LI/SS	Version	S.W. (mm)	O.D. (mm)	SLR (mm)	RC (mm)	RIM	
										Rec.	Alt.
	7.00 - 12	-	-	-	STD NM	168	658	-	-	5.00 S - 12	-
	7.00 - 12	-	-	-	LIP NM	168	658	-	-	5.00 S - 12	-
	7.00 - 12	-	-	-	STD	168	658	-	-	5.00 S - 12	-
	7.00 - 12	-	-	-	LIP	168	658	-	-	5.00 S - 12	-
	23 X 10 - 12	-	-	-	STD NM	236	584	-	-	8.00 G - 12	-
	23 X 10 - 12	-	-	-	LIP NM	236	584	-	-	8.00 G - 12	-
	23 X 10 - 12	-	-	-	STD	236	584	-	-	8.00 G - 12	-
	23 X 10 - 12	-	-	-	LIP	236	584	-	-	8.00 G - 12	-
	27 X 10 - 12	-	-	-	STD NM	240	677	-	-	8.00 G - 12	-
	27 X 10 - 12	-	-	-	LIP NM	240	677	-	-	8.00 G - 12	-
	27 X 10 - 12	-	-	-	STD	240	677	-	-	8.00 G - 12	-
	27 X 10 - 12	-	-	-	LIP	240	677	-	-	8.00 G - 12	-
	315/45-12	-	-	-	STD	282	578	-	-	10.00G-12	-
	315/45-12	-	-	-	LIP	282	578	-	-	10.00G-12	-

STD: Standard - LIP: LIP Version - STD NM: Standard Non Marking - LIP NM: LIP Non Marking



◆  
Solid



# MAGLIFT

MAGLIFT has been particularly designed for forklift in industrial and logistic operations. This solid tire features high load capacity and outstanding comfort. MAGLIFT shows excellent cut and chip resistance resulting in a long tire life. Its reinforced structure eliminates slippage risks whilst the special bead shape simplifies mounting operations on the rim.



Performance



Ø 15"	Tire size	Type	PR	LI/SS	Version	S.W. (mm)	O.D. (mm)	SLR (mm)	RC (mm)	RIM	
										Rec.	Alt.
	7.00 - 15	-	-	-	STD NM	180	730	-	-	5.5 - 15	-
	7.00 - 15	-	-	-	LIP NM	180	730	-	-	5.5 - 15	-
	7.00 - 15	-	-	-	STD	180	730	-	-	5.5 - 15	-
	7.00 - 15	-	-	-	LIP	180	730	-	-	5.5 - 15	-
	7.50 - 15	-	-	-	LIP NM	193	756	-	-	6.0 - 15	-
	7.50 - 15	-	-	-	STD NM	193	756	-	-	5.5 - 15	-
	7.50 - 15	-	-	-	STD NM	193	756	-	-	6.0 - 15	-
	7.50 - 15	-	-	-	LIP NM	193	756	-	-	5.5 - 15	-
	7.50 - 15	-	-	-	STD	193	756	-	-	5.5 - 15	-
	7.50 - 15	-	-	-	STD	193	756	-	-	6.0 - 15	-
	7.50 - 15	-	-	-	LIP	193	756	-	-	5.5 - 15	-
	7.50 - 15	-	-	-	LIP	193	756	-	-	6.0 - 15	-
	8.15-15/28x9-15	-	-	-	STD	218	691	-	-	7.0 - 15	-
	8.15-15/28x9-15	-	-	-	LIP NM	218	691	-	-	7.0 - 15	-
	8.15-15/28x9-15	-	-	-	STD NM	218	691	-	-	7.0 - 15	-
	8.15-15/28x9-15	-	-	-	LIP	218	691	-	-	7.0 - 15	-

STD: Standard - LIP: LIP Version - STD NM: Standard Non Marking - LIP NM: LIP Non Marking

Ø 15"	Tire size	Type	PR	LI/SS	Version	S.W. (mm)	O.D. (mm)	SLR (mm)	RC (mm)	RIM	
										Rec.	Alt.
	8.25 - 15	-	-	-	STD NM	207	818	-	-	6.5 - 15	-
	8.25 - 15	-	-	-	LIP NM	207	818	-	-	6.5 - 15	-
	8.25 - 15	-	-	-	STD	207	818	-	-	6.5 - 15	-
	8.25 - 15	-	-	-	LIP	207	818	-	-	6.5 - 15	-
	28 X 12.5 - 15	-	-	-	STD NM	295	687	-	-	9.75 - 15	-
	28 X 12.5 - 15	-	-	-	LIP NM	295	687	-	-	9.75 - 15	-
	28 X 12.5 - 15	-	-	-	STD	295	687	-	-	9.75 - 15	-
	28 X 12.5 - 15	-	-	-	LIP	295	687	-	-	9.75 - 15	-
	250 - 15	-	-	-	STD NM	216	718	-	-	7.0 - 15	-
	250 - 15	-	-	-	LIP NM	216	718	-	-	7.0 - 15	-
	250 - 15	-	-	-	STD	216	718	-	-	7.0 - 15	-
	250 - 15	-	-	-	LIP	216	718	-	-	7.0 - 15	-
	300 - 15	-	-	-	STD NM	255	820	-	-	8.0 - 15	-
	300 - 15	-	-	-	LIP NM	255	820	-	-	8.0 - 15	-
	300 - 15	-	-	-	STD	255	820	-	-	8.0 - 15	-
	300 - 15	-	-	-	LIP	255	820	-	-	8.0 - 15	-

STD: Standard - LIP: LIP Version - STD NM: Standard Non Marking - LIP NM: LIP Non Marking



◆  
Solid



# MAGLIFT PREMIUM

MAGLIFT PREMIUM is a solid tire specially designed for heavy forklift operations in port, mining or scrap yard applications. The extra deep tread (25% more compared to the standard version) with its aggressive and robust pattern provides outstanding front and lateral traction in addition to excellent steering control. The unique tread compound ensures high cut and chip resistance resulting in an extended tire life-cycle. Additional features are low rolling resistance and a smooth run.

Ø 9"	Tire size	Type	PR	LI/SS	Version	S.W. (mm)	O.D. (mm)	SLR (mm)	RC (mm)	RIM	
										Rec.	Alt.
Ø 9"	6.00 - 9	-	-	-	STD NM	137	536	-	-	4.00 E - 9	-
	6.00 - 9	-	-	-	LIP NM	137	536	-	-	4.00 E - 9	-
	6.00 - 9	-	-	-	STD	137	536	-	-	4.00 E - 9	-
	6.00 - 9	-	-	-	LIP	137	536	-	-	4.00 E - 9	-
Ø 10"	6.50 - 10	-	-	-	STD	150	582	-	-	5.00 F - 10	-
	6.50 - 10	-	-	-	LIP	150	582	-	-	5.00 F - 10	-
Ø 12"	7.00 - 12	-	-	-	STD	163	664	-	-	5.00 S - 12	-
	7.00 - 12	-	-	-	LIP	163	664	-	-	5.00 S - 12	-

STD: Standard - LIP: LIP Version - STD NM: Standard Non Marking - LIP NM: LIP Non Marking



# MAGLIFT ECO

MAGLIFT ECO has been particularly designed for forklifts. The tire features a wide lug pattern providing maximum stability and optimized load distribution. Its reinforced structure eliminates slippage risks whilst the specifically designed rim guard ensures protection against wheel damage. MAGLIFT ECO shows excellent traction as well as low rolling resistance and low heat built up for improved efficiency.

Ø 8"	Tire size	Type	PR	LI/SS	Version	S.W. (mm)	O.D. (mm)	SLR (mm)	RC (mm)	RIM	
										Rec.	Alt.
Ø 8"	5.00 - 8	-	-	-	STD	102	455	-	-	3.00 D - 8	-
	5.00 - 8	-	-	-	LIP	102	455	-	-	3.00 D - 8	-
	18 X 7 - 8	-	-	-	STD	133	451	-	-	4.33 R - 8	-
	18 X 7 - 8	-	-	-	LIP	133	451	-	-	4.33 R - 8	-
Ø 9"	6.00 - 9	-	-	-	STD	130	522	-	-	4.00 E - 9	-
	6.00 - 9	-	-	-	LIP	130	522	-	-	4.00 E - 9	-
Ø 10"	6.50 - 10	-	-	-	STD	153	571	-	-	5.00 F - 10	-
	6.50 - 10	-	-	-	LIP	153	571	-	-	5.00 F - 10	-

STD: Standard - LIP: LIP Version

Technologies



Extra Deep Tread

Performance



Cut and Chip Resistance



High Load Capacity



Durability



Comfort

◆  
Solid

Technologies



Extra Deep Tread

Performance



Cut and Chip Resistance



High Load Capacity



Durability



Comfort



Stability







# MAGLIFT ECO

MAGLIFT ECO has been particularly designed for forklifts. The tire features a wide lug pattern providing maximum stability and optimized load distribution. Its reinforced structure eliminates slippage risks whilst the specifically designed rim guard ensures protection against wheel damage. MAGLIFT ECO shows excellent traction as well as low rolling resistance and low heat built up for improved efficiency.

### Technologies



Extra Deep Tread

### Performance



Cut and Chip Resistance



High Load Capacity



Durability



Comfort



Stability

Ø 12"	Tire size	Type	PR	LI/SS	Version	S.W. (mm)	O.D. (mm)	SLR (mm)	RC (mm)	RIM	
										Rec.	Alt.
Ø 12"	7.00 - 12	-	-	-	STD	164	645	-	-	5.00 S - 12	-
	7.00 - 12	-	-	-	LIP	164	645	-	-	5.00 S - 12	-
Ø 15"	8.15-15/28x9-15	-	-	-	STD	204	691	-	-	7.0 - 15	-
	8.15-15/28x9-15	-	-	-	LIP	204	691	-	-	7.0 - 15	-
	8.25 - 15	-	-	-	STD	210	808	-	-	6.5 - 15	-
	8.25 - 15	-	-	-	LIP	210	808	-	-	6.5 - 15	-
	300-15	-	-	-	STD	242	820	-	-	8.0-15	-
	300-15	-	-	-	LIP	242	820	-	-	8.0-15	-

STD: Standard - LIP: LIP Version



# MAGLIFT ECO RIB

MAGLIFT ECO RIB is a solid tire specially designed for GSE trailers (ground support equipment). Its reinforced structure eliminates slippage risks whilst the specifically designed rim guard ensures protection against wheel damage. MAGLIFT ECO RIB shows excellent steering control, high stability, low vibration and self-ment for trailers. Additional features are low rolling resistance and low heat built up for improved efficiency.

Ø 8"	Tire size	Type	PR	LI/SS	Version	S.W. (mm)	O.D. (mm)	SLR (mm)	RC (mm)	RIM	
										Rec.	Alt.
Ø 8"	4.00 - 8	-	-	-	STD	122	408	-	-	3.75 I - 8	-
	4.00 - 8	-	-	-	LIP	102	406	-	-	3.00 D - 8	-

STD: Standard



### Performance



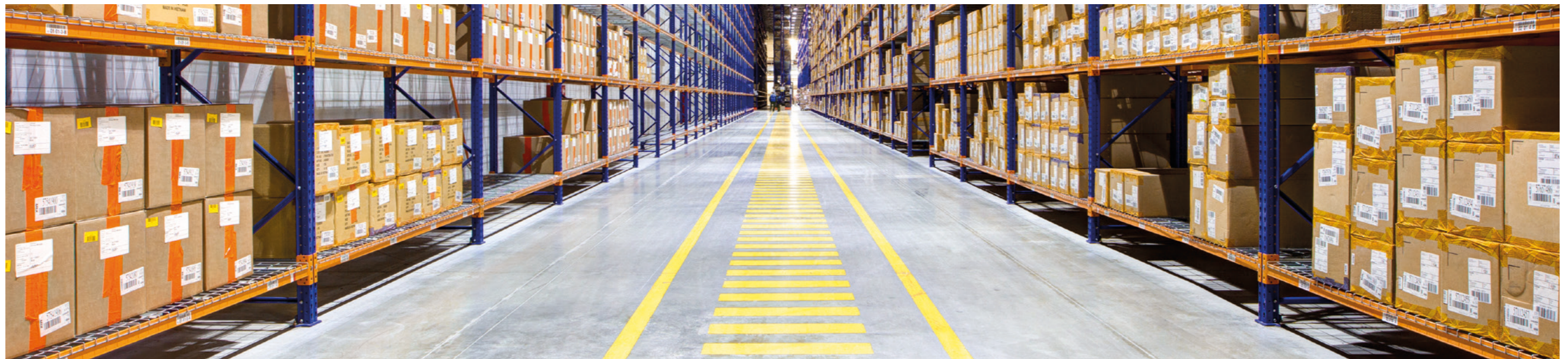
Steering



Low Rolling Resistance



Stability





## Load Index Table

The load index is a code that defines a tire's maximum weight capacity at the speed given by its speed symbol provided that the usage conditions recommended by the Manufacturer are fully complied with.

### Corresponding values of load index (LI) and load capacity per wheel (kg)

LI	kg	LI	kg	LI	kg	LI	kg
50	190	85	515	120	1400	155	3875
51	195	86	530	121	1450	156	4000
52	200	87	545	122	1500	157	4125
53	206	88	560	123	1550	158	4250
54	212	89	580	124	1600	159	4375
55	218	90	600	125	1650	160	4500
56	224	91	615	126	1700	161	4625
57	230	92	630	127	1750	162	4750
58	236	93	650	128	1800	163	4875
59	243	94	670	129	1850	164	5000
60	250	95	690	130	1900	165	5150
61	257	96	710	131	1950	166	5300
62	265	97	730	132	2000	167	5450
63	272	98	750	133	2060	168	5600
64	280	99	775	134	2120	169	5800
65	290	100	800	135	2180	170	6000
66	300	101	825	136	2240	171	6150
67	307	102	850	137	2300	172	6300
68	315	103	875	138	2360	173	6500
69	325	104	900	139	2430	174	6700
70	335	105	925	140	2500	175	6900
71	345	106	950	141	2575	176	7100
72	355	107	975	142	2650	177	7300
73	365	108	1000	143	2725	178	7500
74	375	109	1030	144	2800	179	7750
75	387	110	1060	145	2900	180	8000
76	400	111	1090	146	3000	181	8250
77	412	112	1120	147	3075	182	8500
78	425	113	1150	148	3150	183	8750
79	437	114	1180	149	3250	184	9000
80	450	115	1215	150	3350	185	9250
81	462	116	1250	151	3450	186	9500
82	475	117	1285	152	3550	187	9750
83	487	118	1320	153	3650	188	10000
84	500	119	1360	154	3750	189	10300

## Speed Symbol

The speed code is a value that indicates the maximum admitted speed at which the tire can carry the weight corresponding to its load index provided that the usage conditions recommended by the Manufacturer are fully complied with.

Speed symbol	A1	A2	A3	A4	A6	A8	B	C	D	E	F	J
Km/h	5	10	15	20	30	40	50	60	65	70	80	100
mph	3	6	9	12	19	25	31	37	40	43	50	62



### Corporate Office

**Balkrishna Industries Ltd.**

BKT HOUSE, C/15, Trade World, Kamala Mills Compound, Senapati Bapat Marg, Lower Parel, Mumbai - 400013, India  
 Tel: (+91) 22-6666 3800 - Fax: (+91) 22-6666 3898/99 - e-mail: info@bkt-tires.com - bkt-tires.com

#### BKT Europe srl

Viale Della Repubblica,133  
 20831 Seregno (MB), Italy  
 Tel: (+39) 0362 33 03 28  
 (+39) 0362 32 51 07  
 Fax: (+39) 0362 23 24 72

#### BKT USA Inc.

202 Montrose West, Suite 240  
 Copley, (Akron) Ohio 44321, USA  
 Tel: (+1) 330 836 1090  
 Fax: (+1) 330 836 1091  
 Toll Free: (+1) 888 660 0662

#### BKT Tires (CANADA) Inc.

55 York Street, Suite 401  
 Toronto, Ontario M5J 1R7, Canada  
 Tel: AG/IND (+1) 905 641 5636  
 OTR (+1) 780 888 5667  
 Fax: (+1) 416 229 1711



[bkt-tires.com](http://bkt-tires.com)

### Proud Sponsor of



OFFICIAL OFF-HIGHWAY TIRE OF THE KFC BBL

