

M-1000 SLIPFORMING SYSTEM



M MILLER
FS FORMLESS

LEADERS IN CONCRETE SLIPFORMING

Miller Formless Company
1805 Dot Sreet
McHenry, IL 60050

office 815-385-7700
fax 815-385-2494
www.millerformless.com

M-1000 SLIPFORMING SYSTEM



A heavy duty modular slipform paving machine that can pour radius as tight as 24" or a sidewalk as wide as 5'. Perfect for your curb, curb & gutter, sidewalk and other versatile profiles.

Standard Equipment

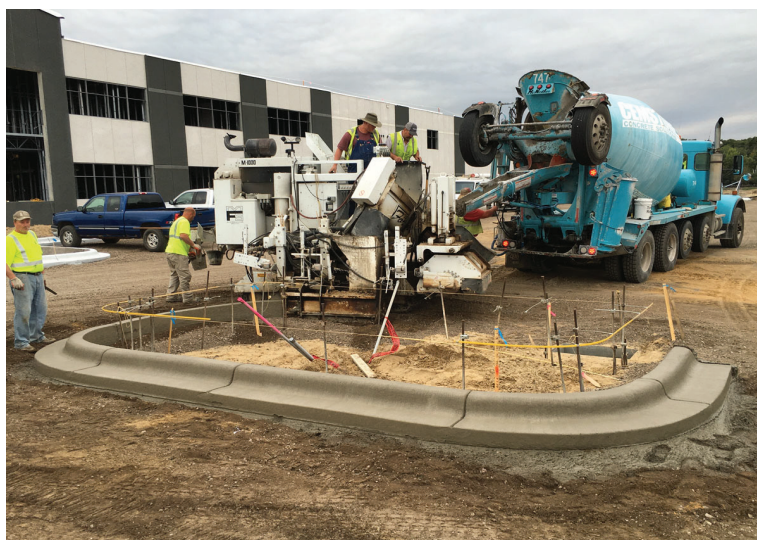
- Tier 4 Final Diesel Engine, Rated at 99 hp (73 kw) at 2400 rpm
- Latest Generation MFS Control System including Sensors and Handheld Remote. 3D Ready.
- Four Tracks with Independent Steering
- Three Vibrators
- Heavy Duty Sectional Auger
- 30" (762 mm) Elevation Tubes
- High Volume Wash Down System
- Quick Mule Mount System
- Right Hand or Left Hand Configuration
- Can Pour as Tight as 24" (610 mm) Radius and as Wide as 5' (1.52 m) Sidewalk
- Transports at 8'6" Wide (2.59 m)

Options

- Umbrella Assembly
- Auxiliary Grade Sensor Assembly
- Auxiliary 12 Volt Work LED Lighting Kit
- Trimmer with Carbide Teeth
- High Pressure Water Pump
- Trim and Pour Hydraulics
- Urethane Track Pads
- Flat Steel Track Pads
- Telematics and Real Time Performance Data

Applications

Curb	Variable Height Curb
Curb & Gutter	V-Ditch
Driveway Cutout	Hydraulic Side Skirts
Sidewalk	Zero Clearance Sidewalk
Combination Scab On / Free Standing	
Hydraulic Wet / Dry (Pitch In / Pitch Out)	



M MILLER
FS FORMLESS

LEADERS IN CONCRETE SLIPFORMING