



**Address:** 1072 Classic Rd. Apex, NC 27539

**Phone :** 919-323-4830

**Email :** [sales@senyatechltd.com](mailto:sales@senyatechltd.com) / [marketing@senyatechltd.com](mailto:marketing@senyatechltd.com)

**Web :** [www.senyacrushers.com](http://www.senyacrushers.com)

# Crawler Crusher and Screen





SENYA is a SANME North America division with a primary focus in North America and South America and a corporate headquarters in North Carolina-Raleigh.

Shanghai SANME Mining Machinery Corp., Ltd. is a leading manufacturer of crushing and screening equipments in China, a Sino-German joint venture holding company.

With modern manufacturing capability and excellent R&D teams of professional engineers, we have devoted ourselves all the time to research and develop new products and technologies since its establishment, which make our developed products achieve advanced world standard.

We not only can offer full range of crushing and screening equipment, including jaw crusher, cone crusher, impact-er, VSI, screen, fine sand recovery, mobile crushing and screening plants, but also provide total solutions. Especially the developed construction waste recycling equipment based on our professional experience for many years has attained internationally advanced level.

Our products are widely applied in the fields of aggregates processing, construction waste recycling and mineral processing, meanwhile, we have exported to more than 40 countries and regions in the world. Our aim is to provide reliable products and services for global customers and create values for our customers.

**919-323-4830**    **senyacrushers.com**

# Product Presentation

## Crawler Jaw crushing plant

- |            |            |
|------------|------------|
| - NFJ1060  | - NFJ1175  |
| - NFJ1480  | - NFJ1480E |
| - NFJ1175E |            |

## Crawler Impact crushing plant

- |            |             |
|------------|-------------|
| - NFI1111  | - NFI1300   |
| - NF1111RS | - NFI1300RS |

## Crawler Cone crushing plant

- |             |             |
|-------------|-------------|
| - NF-C1000  | - NF-C1300  |
| - NF-C1000E | - NF-C1300E |
| - NF-C1000R | - NF-C1300S |

## Crawler Screening plant

- |          |          |
|----------|----------|
| - NFS150 | - NFS350 |
| - NFS330 | - NFS550 |





## CRAWL MOBILE JAW CRUSHERS

Hydraulic drive, rugged, high-performance single toggle plate jaw crusher is with big crushing ratio and high yield.

The feeder with powerful vibration can adjust the speed automatically, making the mainframe operating at full capacity, to achieve the desired productivity High-power hydraulic transmission fully guarantees the functions of precise control and reversing to exclude the blockage in the condition of construction waste and solid waste crushing. Hydraulic adjusting discharge opening can be adjusted quickly to minimize the shutdown time for adjustment.

### SENYA Crawler Jaw Crushing Plants is applicable for :

- ◆ Minerals and hard rock crushing
- ◆ Slag processing
- ◆ Aggregate processing
- ◆ Tunnel crushing
- ◆ Construction waste recycling
- ◆ Cement Industry

## Features and Benefits

Hydraulic adjustment for quick and easy close side setting changes.

Parametric 3-D and FEA designed, performance proven jaw crusher provides flexibility in hard rock.

Adopts optimized power transmission system, high efficiency and lower energy consumption.

Vibrating feeder adopts grid structure, which improves fine grain screening and soil removing.

Optional self-cleaning permanent magnetic separator.

## Technical Data of SENYA Crawler Jaw Crushing Plants:

Model	NFJ1060	NFJ1175	NFJ1480	NFJ1175E	NFJ1480E
Application	Aggregate and solid waste processing, quarry primary crushing.				
Jaw Crusher	JW1060	JW1175	JW1480	JW1175E	JW1480E
Drive	hydraulic			Electric drive	
Max, Feeding size (mm)	550	650	700	650	700
Revolution (rpm)	220-290	220-290	225-265	230-280	225-260
Engine (kW)	CAT C9/224	CAT C9/261	CAT C13/328	Perkins 1104/74.5	Cummins QSB6.7/129
Engine Revolution (rpm)	2000	1900	1800	2200	2200
Pre-screen	Y	Y	Y	Y	Y
Hopper volume (yard <sup>3</sup> )	6	10	12	10	12
Option (yard <sup>3</sup> )	8	N/A	15	N/A	15
Capacity (mtph)	350	475	750	475	750
Approx weight(t)	34.74	51.3	75.2	50	81
Transport Size L*W*H (m)	46'3" x 8'6" x 11'1"	47'7" x 9'6" x 11'6"	59' x 11'6" x 12'5"	46'3" x 9'6" x 11'6"	59' x 11'1" x 12'5"





## CRAWL MOBILE IMPACT CRUSHERS

The equipment mainly deals with raw materials such as limestone, construction waste and other materials with low compressive strength. It can be flexibly combined and matched for different purposes, reducing operating costs and improving equipment utilization. In the design process, the dust point is closely linked, and a water mist spray system is set to reduce dust emissions and ensure efficient and environmentally friendly production. Among them, Crawler Impact Crushing Station is divided into NFI1111 and NFI1313 according to the size of the host, and it has equipment with over-recycling crushing function, which are NFI1111RS and NFI1313RS.



- Three layers screen whose size is 6.1m x 1.525m, and operation channel beside the screen.
- Vibratory plate feeder under the chamber which can aids material discharging and reduces crusher blockages.
- Modular conveyor with raise/lower facility to aid clearance of rebar
- Economical to operate with a highly fuel efficient direct drive system
- Load management system to control feeder speed
- Fully hydraulic assisted apron setting features makes adjustment of the aprons convenient and efficient
- Heavy duty vibrating feeder with integral pre-screen removes dirt fines and sizes bypass material for reprocessing
- Efficient direct drive crusher chamber is supplied with 4 bar rotor as standard. 3 bar rotor is option.

## Technical Data of SENYA Crawler Impact Crushing Plants:

Model	NFI 1111	NFI 1111RS	NFI 1313	NFI 1313RS
Application	Aggregate and solid waste processing, quarry primary and secondary crushing.			
Impact crusher	IH1111		IH1313	
Max. Feeding size (inch)	18"		22"	
Inlet size (inch)	32" x 45"		34" x 49"	
Drive	Direct clutch drive		Directly driven by fluid coupling	
Speed (rpm)	606-740		350-600	
Engine (kW)	CAT C9/242		CAT C13/328	
Pre-screen	with		with	
Capacity (tph)	320		420	
Approx weight(t)	32.8	41.4	49	49
Transport Size L*W*H (m)	48' x 8'6"x11'6"	54' x 10'2" x 11'6"	48' x 10' x12'5"	57' x 10'8" x 12'5"





## CRAWL CONE CRUSHERS

Senya crawler mobile crushing station has the characteristics of high reliability, large crushing ratio, intelligent control, excellent production capacity, compact structure, convenient transportation, and convenient maintenance. It has become a mine crushing, sand and stone aggregate processing, solid waste recovery and recycling. Take advantage of the best choice. Senya crawler cone crushing station is divided into NFC1000 and NFC1300S according to the size of the host; it has dual-use power, NFC1000E and NFC1300E;

### Applicable for:

- ◆ Minerals and Hard rock crushing
- ◆ Slag Processing
- ◆ Aggregates Processing
- ◆ Tunnel Crushing



Hydraulic driven cone crushing host with adjusted speed and high yield can guarantee the finished product grain shape.

Pre- screening system can maximize the production. It can remove the fine materials before it enters into the host to reduce the wear of the host.

Belt feeder has the metal detection system. Automatic shutdown system can play a protective role when the metal objects enters into the host and impurity discharging system can directly remove the metal material out of the machine

## Technical Data of SENYA Crawler Cone Crushing Plants:

Model	NFC1000	NFC1000E	NFC1000RS	NFC1300	NFC1300E	NFC1300S
Application	Secondary and tertiary crushing and aggregate producing.					
Cone model	HC1000			HC1300		
Max.feeding size (inch)	6 1/2"			8 7/8"		
Eccentric shaft speed (adjustable)rpm	350-394			323-357		
Drive	hydraulic	Motor	hydraulic	hydraulic	Motor	hydraulic
Engine	CAT C9/261	Perkins/74.5	CAT C13/328		Cummins QSB6.7/127	CAT C13/328
Engine speed(rpm)	1900	2200	1900		2200	1800
Capacity (mtpH)	260			390		
Approx weight(t)	38.3	45.6	40.6	63	70	49.8
Transport Size L*W*H (m)	55' x 9'2" x 11'6"	55' x 9'2" x 11'6"	62' x 10'4" x 11'6"	60 x 10' x 12'5"	60 x 10' x 12'5"	50' x 10' x 12'3"



### Crawler Screen Plants

## NFS150



NFS150 is a self-contained high capacity mobile scalping unit. Designed and constructed to the highest specification, the NFS150 can withstand the toughest of applications from waste reclamation projects to quarry face and demolition environments, special features include a heavy duty twin deck vibrating grid, remote control movement.

### Crawler Screen Plants

## NFS330



Renowned for its quality, performance and productivity the NFS330 combines scalping, screening and stockpiling into one self-contained unit. Its rugged design enables the NFS330 with its top deck 3.65m x 1.5m and bottom deck 3.00m x 1.52m screen to handle materials such as sand and gravel, limestone, crushed stone, coal, topsoil and demolition waste. Remote tipping reject grid, hydraulic screen tensioning of bottom deck mesh and three on-board hydraulic folding conveyors are standard.

### Crawler Screen Plants

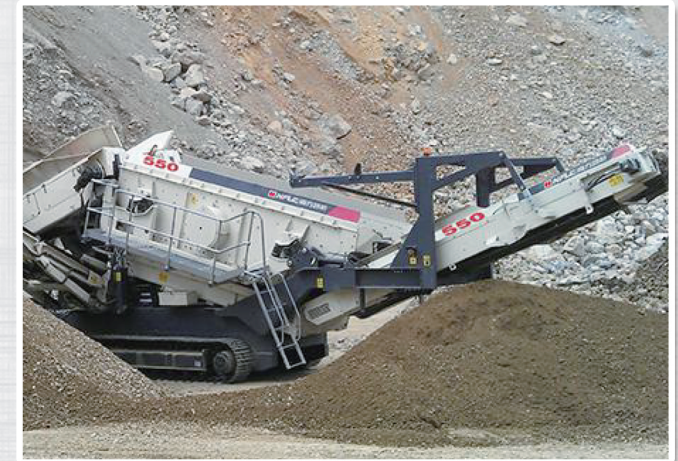
## NFS350



Now with 'best in class' production levels, set up time and ease of operation, NFS350 is the industry's leading tracked mobile inclined screen. A high capacity belt feed hopper is available with remote tipping grid or double deck vibrating grid. The triple deck screen configuration provides three full sized 6.1m x 1.525m screens. An innovative hydraulically folded fourth conveyor allows

### Crawler Screen Plants

## NFS550



The high performance NFS550 is designed to work after a primary crusher or on its own as a frontline tracked mobile screening machine. NFS550 inclined screen is widely used in quarry, mine construction, waste of demolished building, surface soil, materials recycling, and screening of gravel, coal mine and aggregates. The plant has the capacity to process at a rate 500 t/h and can be fed either by a tracked mobile crusher or an excavator.